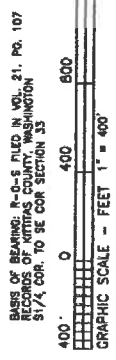
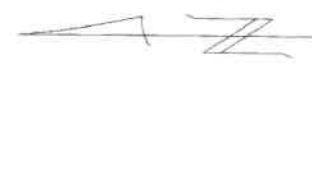


200401020047

BOUNDARY LINE ADJUSTMENT

THAT PORTION OF
 THE NE 1/4 NE 1/4, SE 1/4 NE 1/4, SW 1/4 NE 1/4, NW 1/4 NE 1/4,
 THE NE 1/4 SE 1/4, SW 1/4 SE 1/4, NW 1/4 SE 1/4,
 THE NE 1/4 SW 1/4, SW 1/4 SW 1/4, NW 1/4 SW 1/4,
 THE NE 1/4 NW 1/4, SE 1/4 NW 1/4, SW 1/4 NW 1/4, NW 1/4 NW 1/4,
 ALL IN SECTION 33, TOWNSHIP 20 NORTH, RANGE 14 EAST, W.M.
 KITKAS COUNTY, WASHINGTON



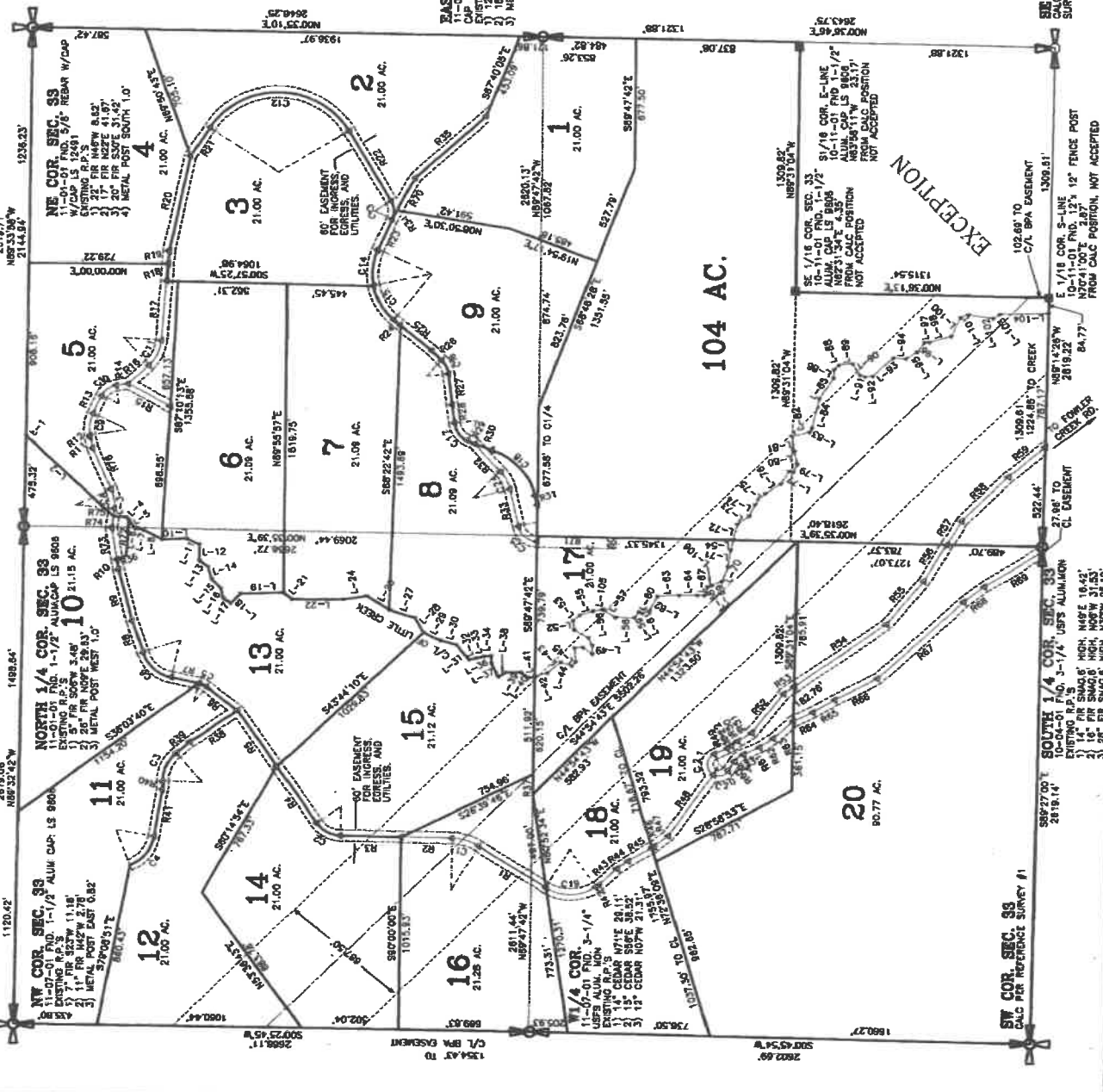
METHOD OF SURVEY
 CONTROL USING A TRIPLEX 4800 GPS RECEIVER
 FIELD TRAVERSE USING A TORCON 075-312 (0700003) THEODOLITE

LEGEND

- SECTION CORNER OR 1/4 CORNER FOUND OR CALCULATED AS NOTED
- 60' EASEMENT FOR INGRESS, EGRESS, AND UTILITIES

REFERENCE SURVEYS

- SURVEY FILED IN VOL. 21, PG. 107 BY LS 68818
- SURVEY FILED IN VOL. 21, PG. 121 BY LS 19819
- SURVEY FILED IN VOL. 28, PG. 34-25 BY LS 28269



BLUMH & ASSOCIATES LAND SURVEYORS, INC.
 1088 S. MARKET BLVD. CHEHALIS, WA 98532
 PHONE (360) 748-1551 FAX (360) 748-6282

DATE: DECEMBER 22, 2003
 DRAWN BY: J. BENTLEY
 CHECKED BY: KERRY BLUMH

JOB # 01-0288A-2
 COMP 5 & 4-A-00
 SHEET 1 OF 2

RECORD OF SURVEY DESCRIPTION

ALL OF TOWNSHIP 20 NORTH, RANGE 14 EAST, W.M., KITKAS COUNTY, WASHINGTON, EXCEPT THE SE 1/4 OF THE SE 1/4 OF SAID SECTION.

SURVEYOR'S CERTIFICATE

THIS MAP CORRECTLY REPRESENTS A SURVEY MADE BY ME OR UNDER MY DIRECTION IN CONFORMANCE WITH THE REQUIREMENTS OF THE SURVEY RECORDING ACT AT THE REQUEST OF SELLER'S REPRESENTATIVE, SHES & DUM, CREEK IN RECORDER'S... 20-381

JON C. BENTLEY - LICENSE NO. 2030

AUDITOR'S CERTIFICATE

FILED FOR RECORD THIS 29th DAY OF JAN, 2004 AT 3:50 P.M. IN BOOK 29 OF SURVEYS AT PAGE 17 AT THE REQUEST OF BLUMH & ASSOCIATES LAND SURVEYORS, INC.

DAVID B. BENTLEY